



# G6

## HIGH OUTPUT CEILING SPEAKERS

### FEATURES

- ◆ 6" Woofer & 3/4" Aluminum Tweeter
- ◆ Aluminum Mounting Dogs
- ◆ White Powder Coat Paint
- ◆ All aluminum construction
- ◆ Split Ring T-Bar Support
- ◆ Optional Speed Saw



### DESCRIPTION

Enforcer G Series Loudspeaker Systems are complete self-contained coaxial, bass-reflex speaker systems. These high output packages utilize a unique and effective cooling system called Air Gap Technology (AGT).

The basket of this little monster is not the typical stamped metal type of basket commonly found around other speakers. A series of precision holes found in the aluminum cast basket act as heat transfer points that pull heat from the gap. This coupled with the gap between the cone and the spider, make this an effective way of maintaining top performance even under extreme demands.

Consisting of aluminum, cone woofers and aluminum high output tweeters, the G-series also utilizes a built-in 70 Volt transformer that offers a variable tap selection switch and a transformer by-pass (selectable by removing the front grill).

The G6 is enclosed in an all aluminum bezel assembly with fully mounted metal sealed back can leaving no plastic or ABS parts. The enclosure has removable non-fibreglass damping material inside and white powder coat paint on the outside and comes complete with T-Bar supports. Wiring terminations are enclosed in a rear compartment utilizing a smart connect plug, wire restraint, and removable cover plate for ease of installation.

When flush mounting, the entire installation can be done from below the ceiling grid. The split tile support can easily be pasted through the hole and into place. The G6 speakers are then pushed up into the mounting hole and the four machine screws found under the grill are used to operate the four aluminum tie down dogs, installation is that simple.

Also capable of free space installations where architecture is opened and flush mounting is not an option the G series speakers are equipped with four hang points. The back can is an attractive powder coat white. Whether installed flush or free hang, one product will promote consistency and ease when ordering and installing.

To make this product even more contractor-friendly, there is an option of ordering the back plate on its own (G6IP input plate for G6). These can be installed along with the connector. The G6 speaker can then be easily installed at a later date.

Supplying Dealer

# G6

## HIGH OUTPUT CEILING SPEAKERS

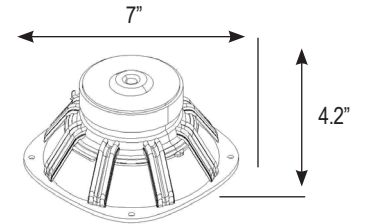
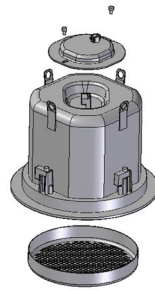


### SPECIFICATIONS

System	
Type	G-Series high output ceiling speaker
Drivers	6" Woofer & ¾" High Frequency Tweeter
Power Taps (70V)	60W, 30W, 15W, 7.5W, bypass (16 ohm)
Power Taps (100V)	60W, 30W, 15W, bypass (16 ohm)
Power Handling Direct	150 Watts RMS
Sensitivity (1W/1M)	89dB
Frequency Range	60Hz / 20kHz ± 10dB (Direct)
Nominal Impedance	16Ω 70 Volt
Cross Over	Passive
Connector	Removable Phoenix up to 12 AWG wire size

Transducer Construction	
Woofer Size	6" cone 1" voice coil
Surround Material	Rubber
Cone Material	Aluminum
Voice Coil Material	Insulated Copper
Voice Coil Former	Aluminum
Speaker Basket	Cast Aluminum
Tweeter Size	1 7/8" Flare ¾" Voice Coil
Material	Aluminum
Frame and Flare	Aluminum

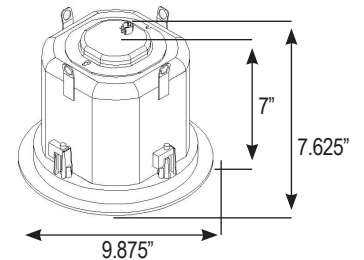
Enclosure Construction	
Baffle Material	Fine mesh steel screen with removable cloth insert (not visible)
Bezel & Tie Down Dogs	Aluminum
Back Can	Metal



Shipping	
Weight	27 lbs.
Carton Size	29"L x 11.25"H x 11.25"W
Shipped	In Pairs

#### Parts Include:

- 2 G6 Speakers,
- 2 Speaker Grills,
- 2 Input Plates, 2 Plug-in Termination Connectors, 4 T-Bars,
- 2 Split Ring Supports,
- 2 Paint Protectors,
- 1 Manual, 1 Warranty Card



Support Hardware	
T-Bar & Split Ring	Included with each pair
Drywall Rough in	EDRG6 - Optional rough in plate spans 16" centers
Free Space Hang Wire	GS2 - Optional fly cable for free space installations
Speed Saw	HA4568 - Optional circle cutter, cuts perfect holes for 4" to 8" speakers
Input Plate	G6IP - Optional additional input plates, pre-installed to conduit, making installation fast and simple



T-Bar



Split Ring



Drywall Rough in EDRG6



Speed Saw HA4568



Input Plate G6IP



Free Hang System GS2

Supplying Dealer

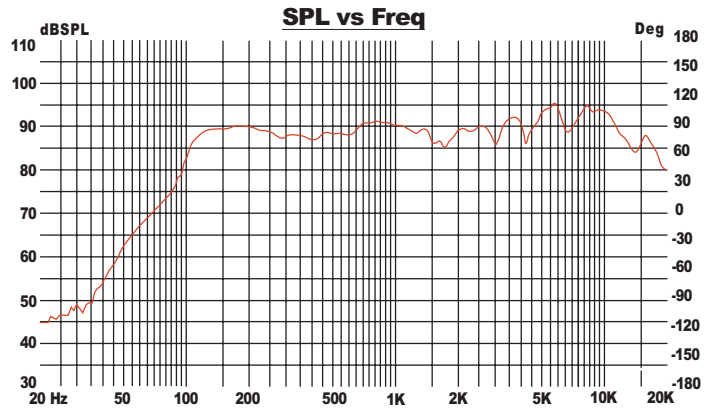
**TO ORDER CALL: 1-800-565-3586 (EASTERN CANADA) OR 1-800-667-7670 (WESTERN CANADA)**

High Output Ceiling Speakers G6 12/05



POLAR RESPONSE

Freq. HZ	Deg.	Q	DIdB
250	194°	1.9	2.8
500	193°	2	3
1k	189°	2.5	3.9
2k	181°	3.5	5.5
4k	115°	4.1	6.2
8k	94°	4.1	6.1
16k	44°	11.9	10.8



ARCHITECTS SPECIFICATIONS

The Loudspeaker shall be of an in-ceiling flush mount design. Consisting of a 6" low frequency driver utilizing AGT for cooling of Voice Coil and maximum heat dissipation, a coaxially mounted 3/4" high frequency Aluminum Tweeter. This system shall have a frequency response of 60Hz-20kHz ±10 and a nominal dispersion of 120° 70 Volt tap selections as follows 60W, 30W, 15W, 7.5W plus direct having a nominal impedance of 16Ω. Products not having a direct selection on the tap selector will not be accepted. Tap selection shall be done by a rotary switch front mounted, located behind the grill and out of sight. The termination connector shall be a removable phoenix.

This system is to be a self contained coaxial speaker system complete with bezel, grill, back box, crossover, 70 Volt transformer and support hardware for drop tile ceilings. This speaker system shall need no assembly.

Construction of this system shall be as follows:

- Bezel: Aluminum
- Grill: Steel
- Back Can: Steel

All to be powder coat painted white.

Having the following dimensions:  
 Over all depth shall not exceed 7.7"  
 Over all diameter shall not exceed 9.9"

The speaker system must have a removable termination cover that can pre-install on site when the wire is pulled in allowing the speakers to be installed at a later date. The loud speaker system shall be an Enforcer G6 speaker system.

Supplying Dealer