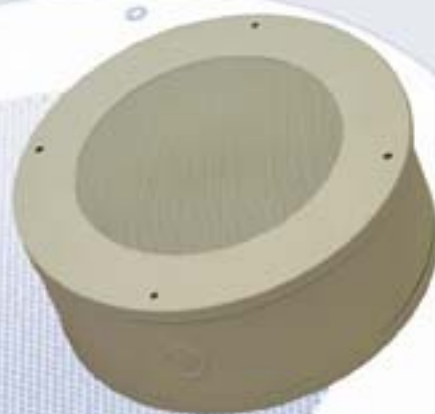


Surface Mount Speaker Assemblies (with Back Can)

Available in both round and square, these speaker devices come complete and ready to install. They include speaker, transformer and baffle completely assembled with a surface mount back box. A variety of 8" speakers are available depending on the individual requirements. These speaker assemblies are equipped with the ET10 25/70 volt transformer. For specifications on speakers see pgs 23-24.



All ship complete with surface mount baffle and back can.



E86CWT10CC



E86CWT10SA

Model	Speaker Size	Magnet Size	Transformer	Round / Square	Premium Coaxial
E86CWT10CC	8"	6oz	10w	R	
E810CWT10CC	8"	10oz	10w	R	
EPCX801T10CC	8"	10oz	10w	R	✓
E86CWT10SABB	8"	6oz	10w	S	
E810CWT10SABB	8"	10oz	10w	S	
E8CX801T10SABB	8"	10oz	10w	S	✓



Accessories

- Other surface mount back cans - pg 21
- Other surface mount speaker systems - pg 3